



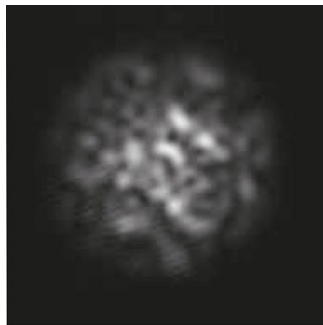
Fiber Shaker

- Smaller size (same as MPX)
- Dual fiber inputs: OM1/OM2 or OM3/OM4
- Low noise
- Light weight
- Shake frequency of 10Hz



Arden's Modal Explorer makes measurement of Encircled Flux easy and accurate, and it complies with international standards. But if you are measuring laser-based transmission light sources for multi-mode systems you may need to use a test jumper assembly and fiber shaker in order to avoid "speckle". Industry standards, for example IEEE 802.3aq and FOTP-203, call for the use of a mechanical fiber shaker.

The Arden Fiber Shaker reduces speckle by changing the differential path length of the modes in the fiber. The fiber is shaken continuously to allow the speckle to be averaged out. This will ensure sufficient repeatability for the measurement of the Encircled Flux.



Light source output without shaker



Light source output with Shaker

Technical Specification

| | |
|--------------------------------------|----------------------------------------------------------------------------|
| Fiber Types | OM1, OM2, OM3 and OM4 |
| Input & Output Connectors | FC/PC |
| Frequency of Shaking | 10Hz |
| Insertion Loss | <1dB |
| Size | 260mm (W) x 270mm (D) x 90mm (H) |
| Weight | 2.0kg |
| Power | External switched mode power supply. Requirements: 90 – 240V, <500mA, <50W |
| Operating Temperature | +5 to +40°C |
| Storage Temperature | -10 to +50°C |

For North American sales enquiries call **(727) 478-2651** or email us on sales@ardenphotonics.com

For Rest of World sales enquiries call **+44 (0)121 733 7721** or email us on sales@ardenphotonics.com

Iss 07 Apr 21

**Manufactured by
Arden Photonics Ltd**

Arden Photonics Ltd,
Royston House, 267 Cranmore Boulevard,
Shirley, Solihull, B90 4QT, UK
+44 (0)121 733 7721

Arden Photonics, LLC,
4500 140th Avenue North, Suite 101,
Clearwater, FL 33762, USA
+1 (727)478-2651

www.ardenphotonics.com
enquiries@ardenphotonics.com