



The MPX Modal Explorer



The MPX Modal Explorer is the Encircled Flux meter of choice for leading companies around the world. Simply connect your source and patchcord to the MPX, and it will measure Modal Launch Conditions in real-time.

Product highlights

- End face inspection mode with focus indicator to give better repeatability from operator to operator
- Power monitor - optimize light throughput and modal conditions simultaneously
- Real-time measurement - adjust modal conditions easily as well as increase productivity
- Internal LED with fully filled launch condition
- USB2.0 connection gives portability - with the optional carrying case plus a laptop computer
- Optional geometrical calibration artefact to enable user calibration of MPX
- API software control feature designed for use in the production environment

Applications include

- Source and patchcord characterization for IEC11801 and TIA/EIA568 LAN testing
- VCSEL characterization for Gigabit Ethernet IEEE 802.3
- Mode-scrambler and mode-filter characterization
- Connector inspection
- Measure sources to IEC 61280-4-1
- Alignment of pig-tailed light sources



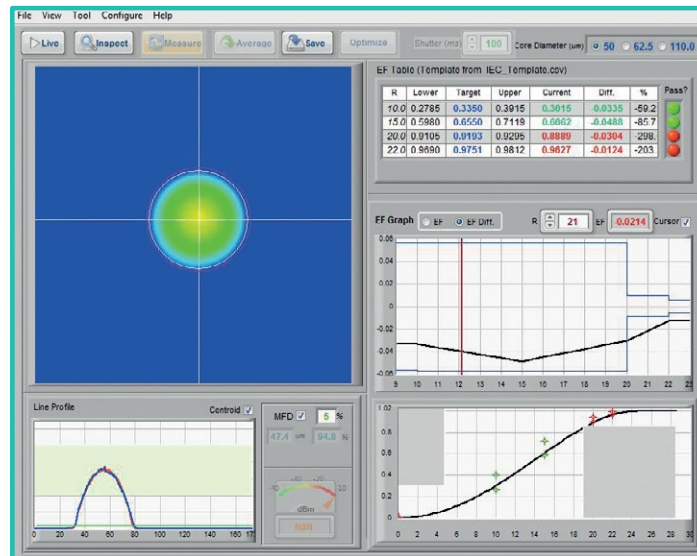
MPX Geometrical Calibration Artefact (Optional)



MPX-2 in Carrying Case (Optional)



The MPX Modal Explorer



Screenshot of MPX Modal Explorer

Technical Specification

	MPX-1	MPX-2
Wavelength	850nm (Encircled Flux measurement range is from 400 to 1100nm but End Face Inspection and Focusing is at 850nm)	1300nm (Encircled Flux measurement range is from 900 to 1700nm but End Face Inspection and Focusing is at 1300nm)
Size	260mm (W) x 270mm (D) x 90mm (H) 10" (W) x 10.5" (D) x 3.5" (H)	260mm (W) x 390mm (D) x 110mm (H) 10" (W) x 15" (D) x 4.5" (H)
Weight	2.5kg / 5.5lb	7.0g / 15.5lb
Dynamic Range	60dB	>60dB
Image Sensor	CCD array, 12 bit, 4.65µm square pixels	InGaAs array, 12 bit, 30.0µm square pixels
Maximum core diameter	110µm	110µm
Maximum source power	Approx 10mW (depends on power density, fiber type etc.)	Approx 10mW (depends on power density, fiber type, etc.)
Input connector adaptors available	Universal 2.5mm ferrule; LC (both supplied as standard) FC, ST, SC, MTP, Bare fiber (optional)	Universal 2.5mm ferrule; LC (both supplied as standard) FC, ST, SC, MTP, Bare fiber (optional)
End Face Inspection and Focusing	850nm LED	1300nm LED
Built-in reference source	850nm LED, FC connector, over-filled (110µm core diameter; 0.37 N.A.)	1300nm LED, FC connector, over-filled (110µm core diameter; 0.37 N.A.)
Power	External switched mode power supply (supplied)	External switched mode power supply (supplied)
Connection to computer	USB 2.0 (USB B to USB A: 2m cable supplied)	USB 2.0 (USB B to USB A: 3m cable supplied)
Computer requirements (minimum specification)	2GB RAM ; USB 2.0 port - NOTE system may not work with USB 3	2GB RAM ; USB 2.0 port - NOTE system may not work with USB 3
Operating systems supported	Windows 7 / 8 / 10, 32bit or 64bit	Windows 7 / 8 / 10, 32bit or 64bit
Operating Temperature	0° – +50°C	0° – +50°C
Humidity	5% – 95%, relative, non-condensing	5% – 95%, relative, non-condensing



The MPX Modal Explorer

Ordering Information

Part Number	Description
MPX-1	MPX-1 system for modal analysis of multi-mode fibers at 850nm, including optical unit, cables, software package and user manual. System is supplied with a universal 2.5mm connector adaptor and an LC connector adaptor. Computer not included. See product specification for information about computer configuration.
MPX-2	MPX-2 system for modal analysis of multi-mode fibers at 1300nm, including optical unit, cables, software package and user manual. System is supplied with a universal 2.5mm connector adaptor and an LC connector adaptor. Computer not included. See product specification for information about computer configuration.

Options	Description
MPX-API	MPX API software add on, designed for accessing and controlling the MPX for automated testing (additional license required)
MPX-CC-01	Rigid carrying case for MPX-1
MPX-CC-02	Rigid carrying case for MPX-2
MPX-CP01	Chrome-on-Glass calibration artefact and software package for MPX-1 and MPX-2 to enable user calibration traceable to NPL standards. Includes Chrome-on-Glass artefact, software CD and operation instructions
MPX-CAU250	Input connector adaptor for 2.5mm diameter ferrule connectors, universal (supplied as standard with MPX-1 and MPX-2)
MPX-CALC	Input connector adaptor for LC connectors (supplied as standard with MPX-1 and MPX-2)
MPX-CAFC	Input connector adaptor for FC connectors
MPX-CAFC/APC	Input connector adaptor for FC/APC connectors
MPX-CASC	Input connector adaptor for SC connectors
MPX-CASC/APC	Input connector adaptor for SC/APC connectors
MPX-CAST	Input connector adaptor for ST connectors
MPX-CAMTP	Input connector adaptor for MTP connectors
MPX-CAMTRJ	Input connector adaptor for MTRJ connectors
MPX-CAU250/APC	Input connector adaptor for 2.5mm diameter ferrule APC connectors, universal
MPX-SR3-OM12-FC	Fiber shaker with 2 fibers (1x OM1 and 1x OM2); FC/PC connectors on input and output
MPX-SR3-OM12-LC	Fiber shaker with 2 fibers (1x OM1 and 1x OM2); LC/PC connectors on input and output
MPX-SR3-OM34-FC	Fiber shaker with 2 fibers (1x OM3 and 1x OM4); FC/PC connectors on input and output
MPX-SR3-OM34-LC	Fiber shaker with 2 fibers (1x OM3 and 1x OM4); LC/PC connectors on input and output
MPX-UEW3	MPX extended warranty covering parts and labour for 3 years from purchase, return to base. Cover excludes camera
APL-LC	Laptop computer, pre-installed with application software
APL-DC	Desktop computer, pre-installed with application software

For North American sales enquiries call **(727) 478-2651** or email us on sales@ardenphotonics.com

For Rest of World sales enquiries call **+44 (0)121 733 7721** or email us on sales@ardenphotonics.com

Iss 29 Apr 21

Manufactured by
Arden Photonics Ltd

Arden Photonics Ltd,
Royston House, 267 Cranmore Boulevard,
Shirley, Solihull, B90 4QT, UK
+44 (0)121 733 7721

Arden Photonics, LLC,
4500 140th Avenue North, Suite 101,
Clearwater, FL 33762, USA
+1 (727)478-2651

www.ardenphotonics.com
enquiries@ardenphotonics.com